

# Install Manual

## Abstract

The full-featured use of the software needs to follow the three steps to install the software correctly; if you do not use the history function only need to complete the first step.

- 1、CP210X Driver Install Manual
- 2、PostgreSQL Install Manual
- 3、Software Config Manual

# CP210X Driver Install Manual

- 1、 First, the user needs to select the appropriate installation files according to their operating system.

CP210x\_VCP\_Windows.zip support operating system with Windows

XP/Server 2003/Vista/7/8/8.1;

CP210x\_Windows\_Drivers.zip support operating system with Windows

7/8/8.1/10.

- 2、 Unzip the package, select the appropriate installation file. Click CP210xVCPInstaller\_\*\*\*.exe, Appear as shown in Figure 1:



Figure 1

- 3、 Click Next, Appear as shown in Figure 2, Select "I accept this

agreement” .

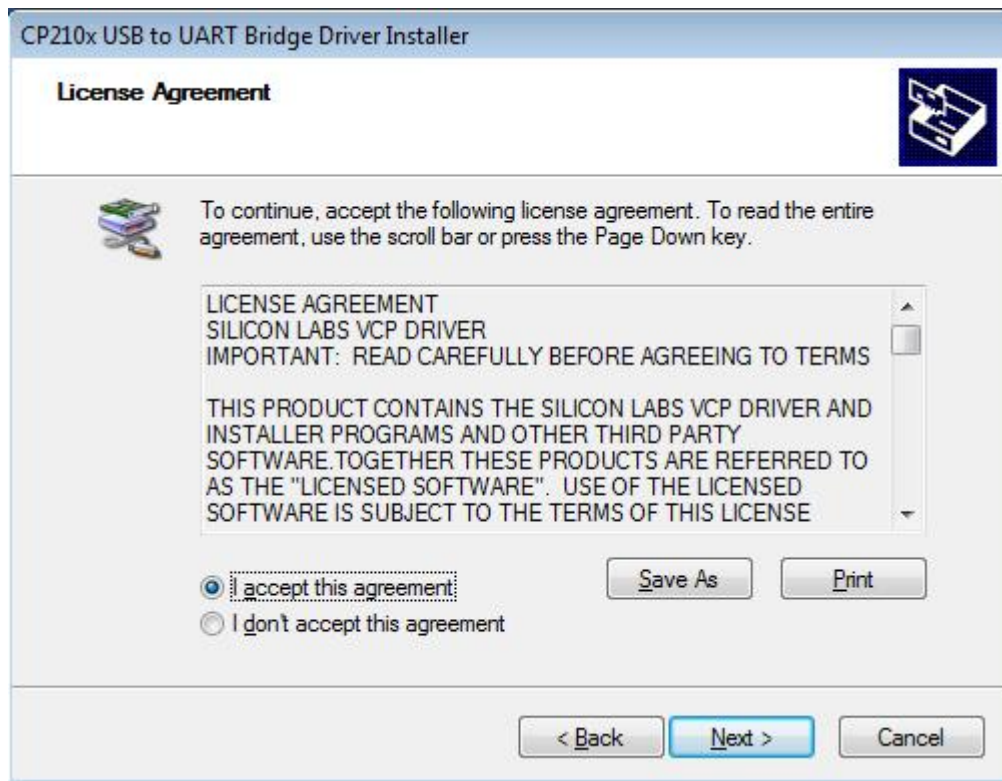


Figure 2

- 4、 Click Next, The installation is running, Please hold on for a moment.
- 5、 The installation is completed, Appear as shown in Figure 3:

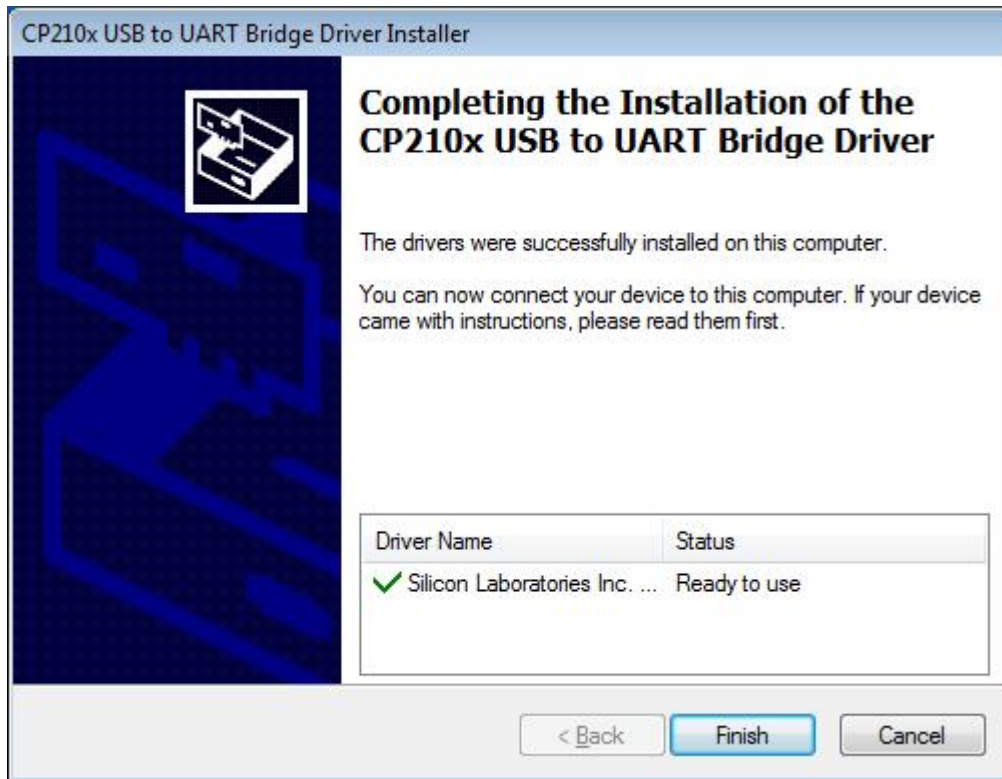


Figure 3

- 6、Click Finish, The instrument can be connected to the PC to verify that the installation is correct.

The verification method is as follows:

See in the Computer Manager has Silicon Labs CP210X USB to UART Bridge(COM\*), Appear as shown in Figure 4:

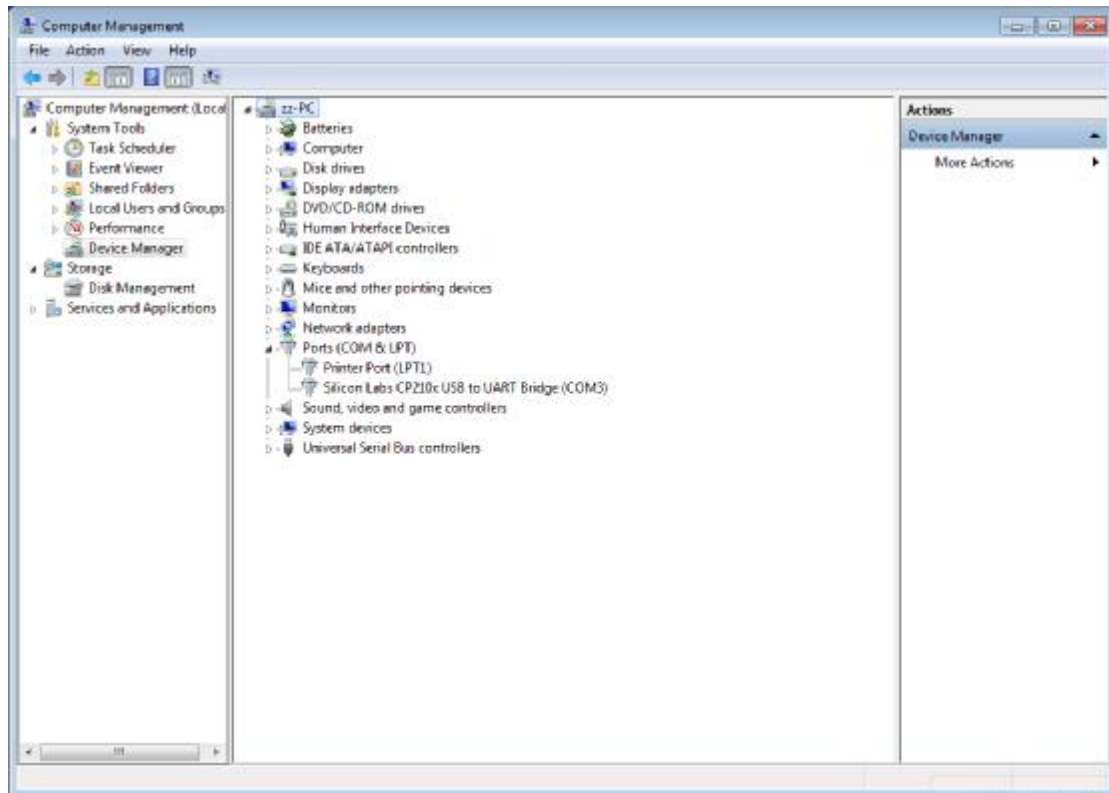


Figure 4

# PostgreSQL Install Manual

Double-click “postgresql-9.5.1-1-windows.exe”, The figure is shown in

Figure 1:



Figure 1

Click “Next”, take the next step, The figure is shown in Figure 2:

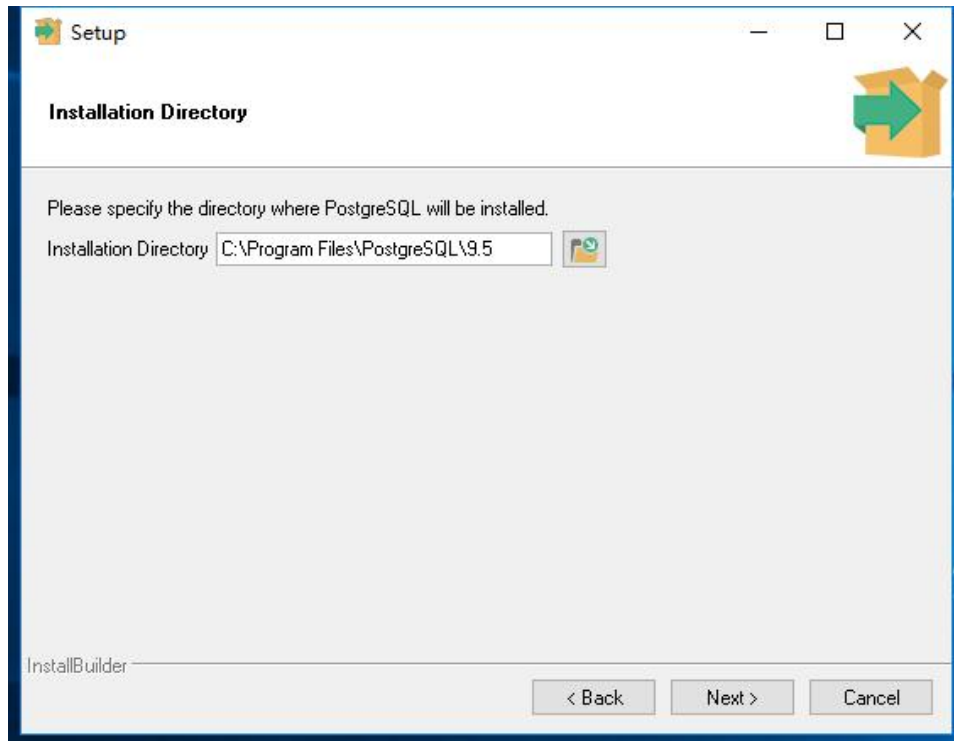


Figure 2

Click "Next", take the next step, The figure is shown in Figure 3:

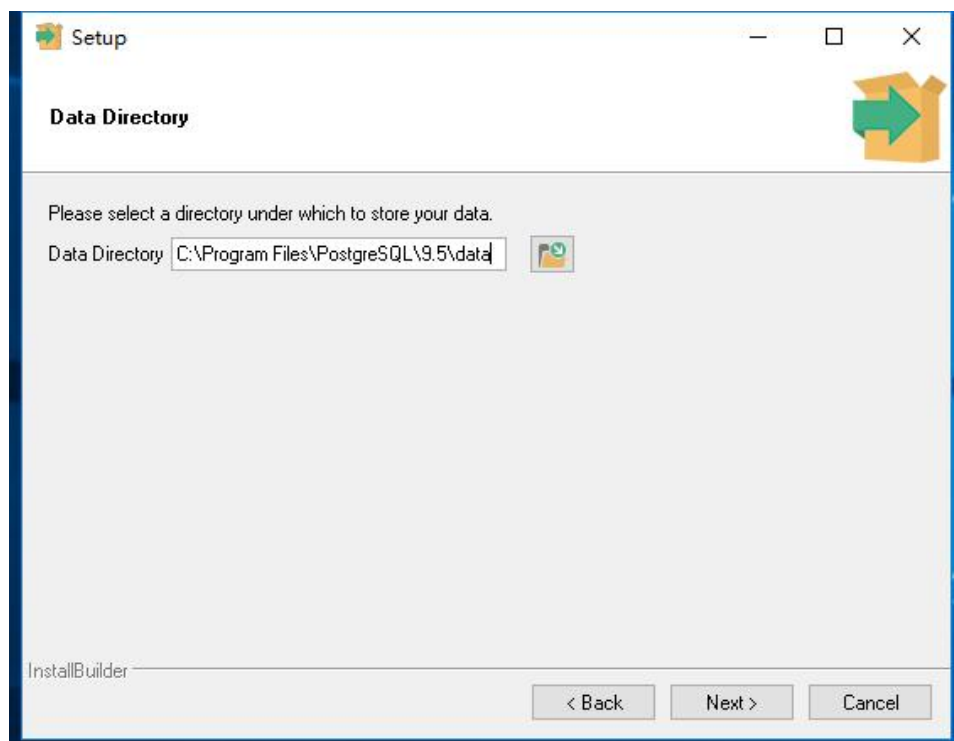


Figure 3

Click "Next", take the next step, The figure is shown in Figure 4:

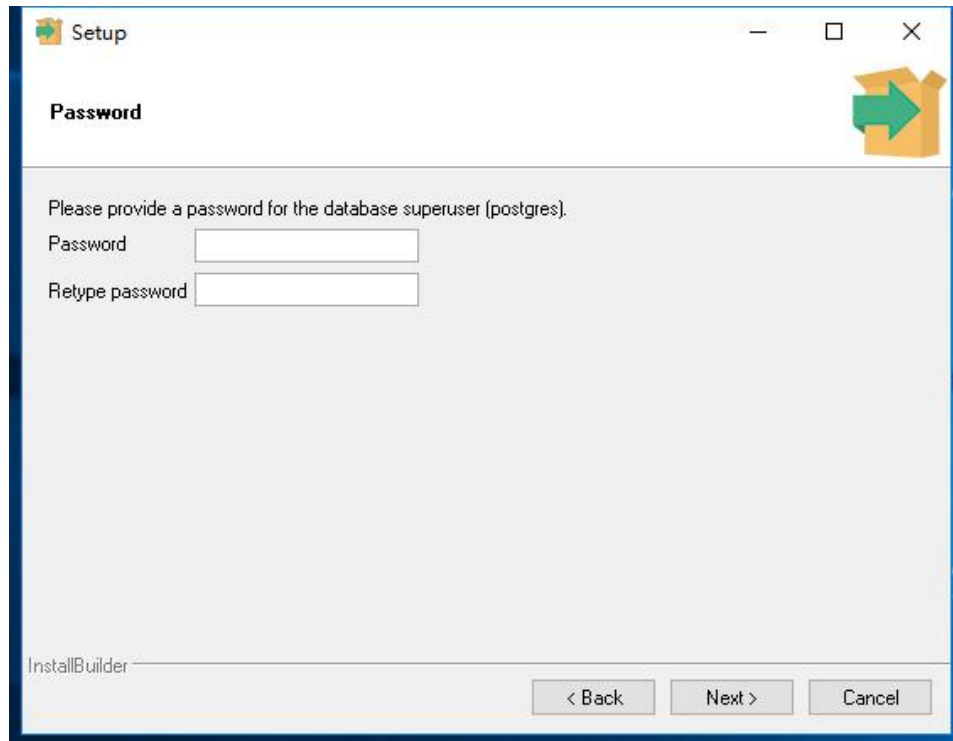


Figure 4

Input password: "a111111" (You do not have modify permission for this),

The figure is shown in Figure 5:

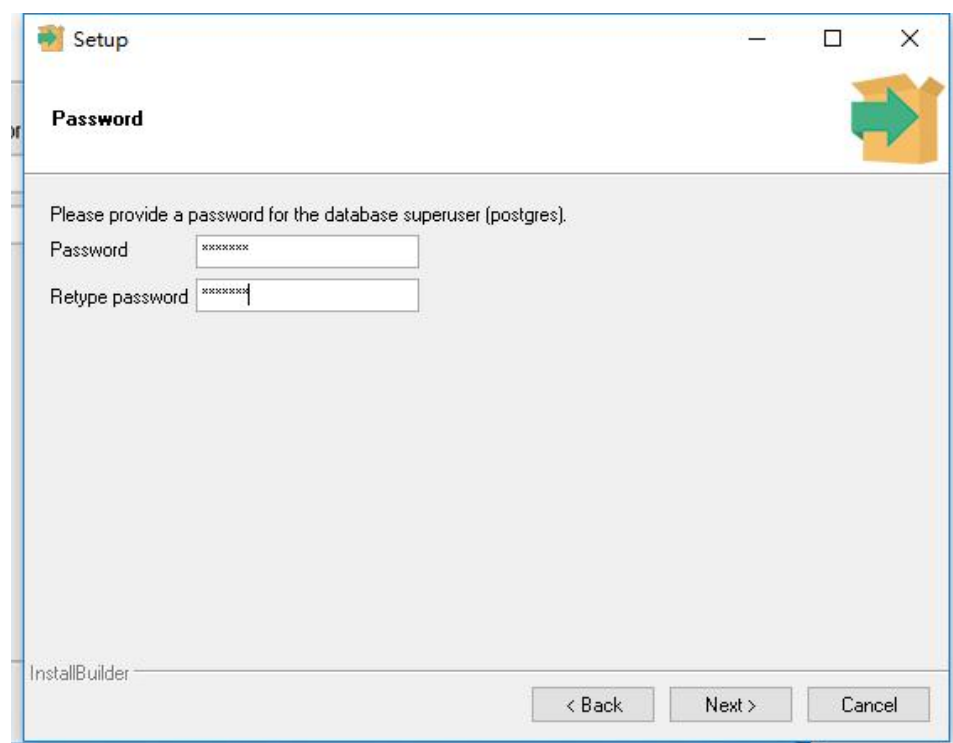


Figure 5



Click “Next”, take the next step, The figure is shown in Figure 6:

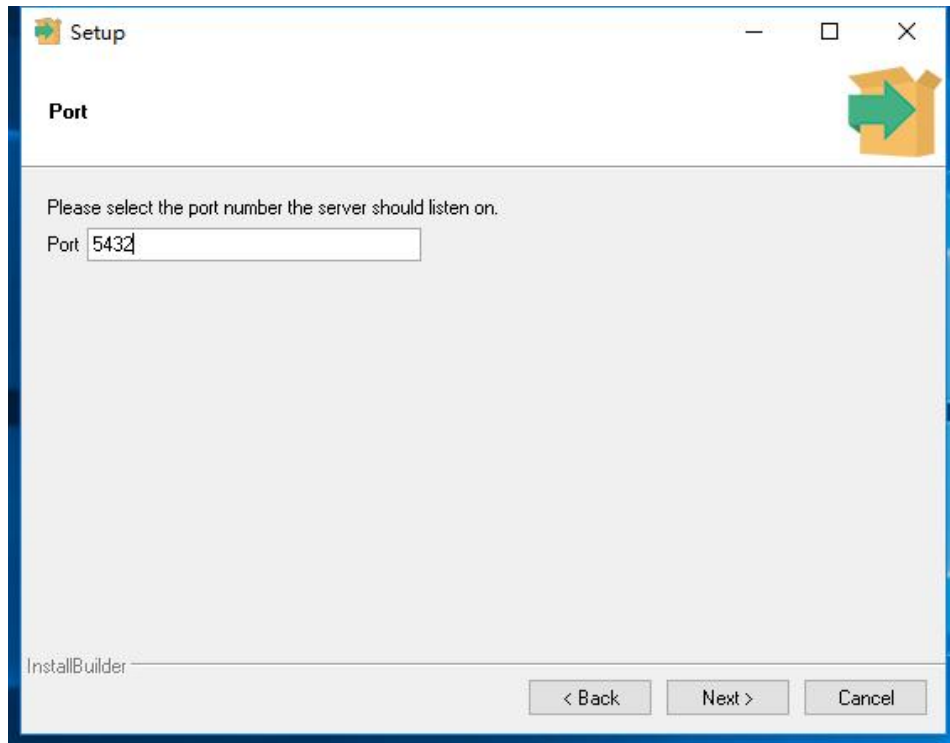


Figure 6

Click “Next”, take the next step, The figure is shown in Figure 7:

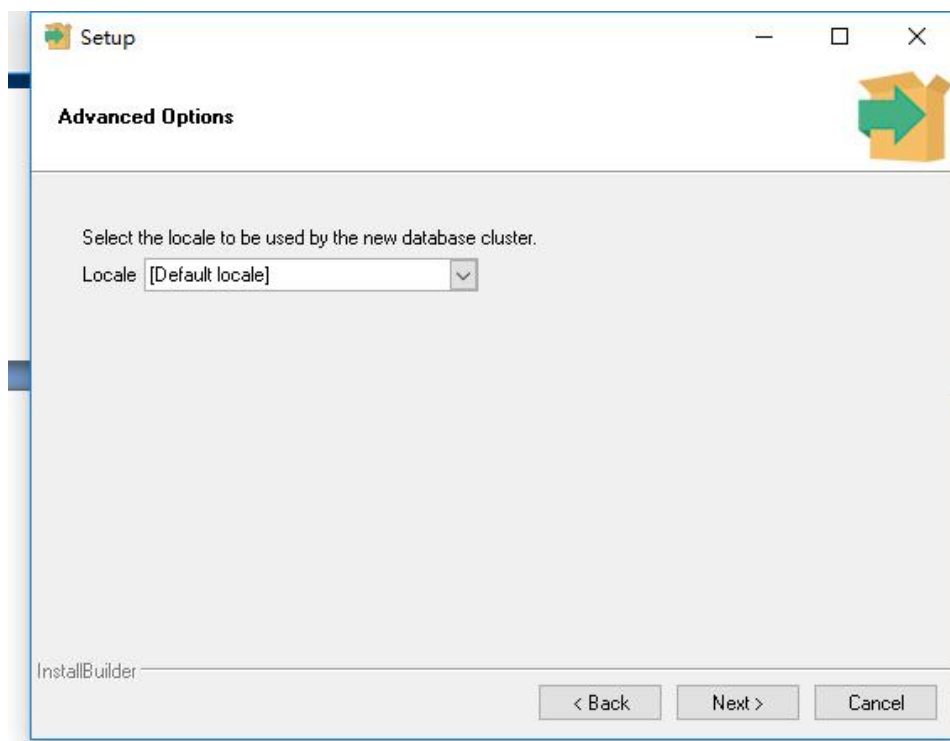


Figure 7

Click “Next”, take the next step, The figure is shown in Figure 8:

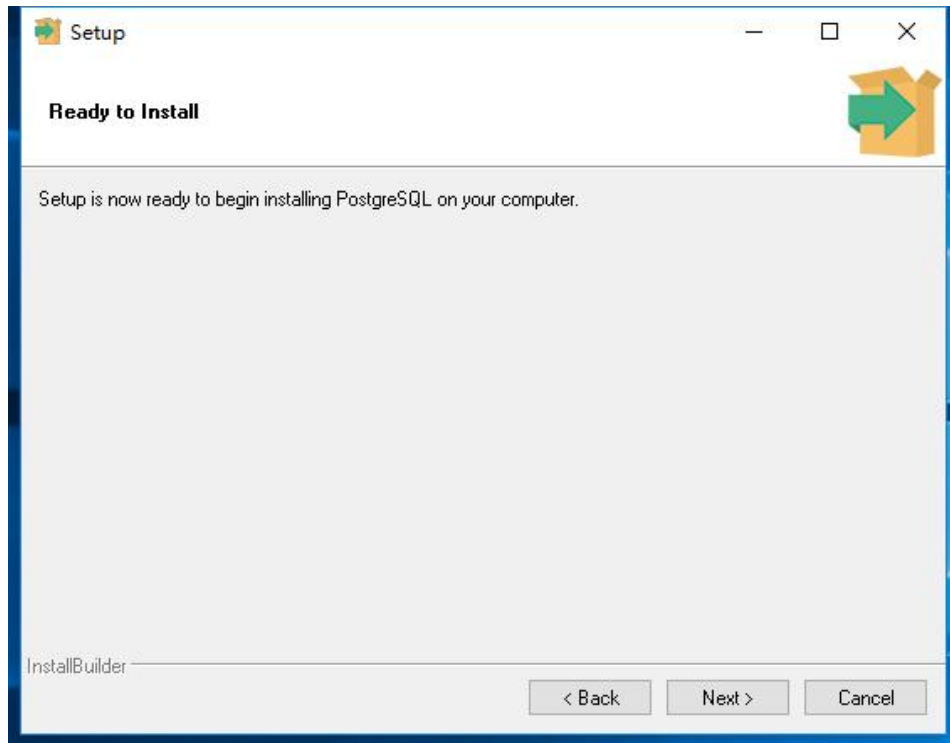


Figure 8

Click “Next”, take the next step, The figure is shown in Figure 9:

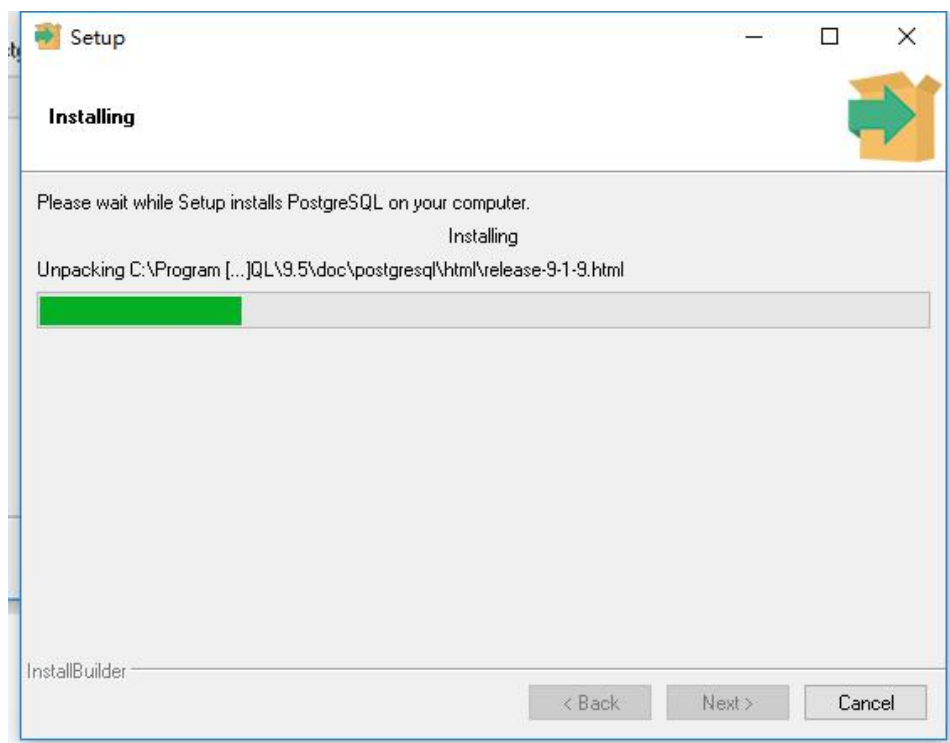


Figure 9

This process may take some time, until the installation is completed, The figure is shown in Figure 10:

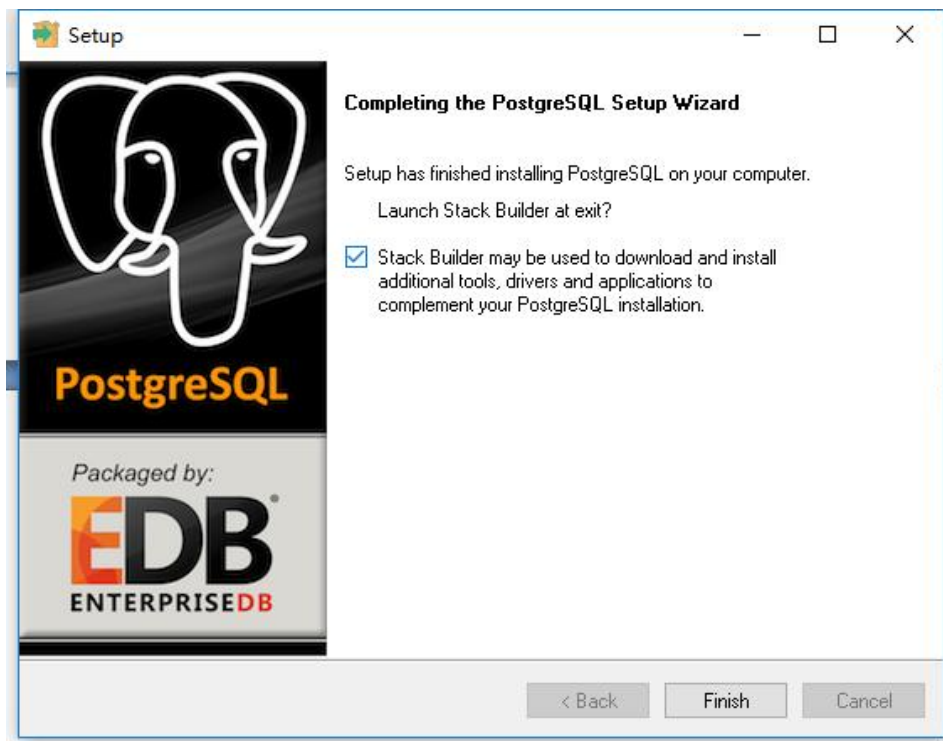


Figure 10

Cancel the checked of the check box on the "Stack Builder may be used to download and install additional tools", The figure is shown in Figure 11:

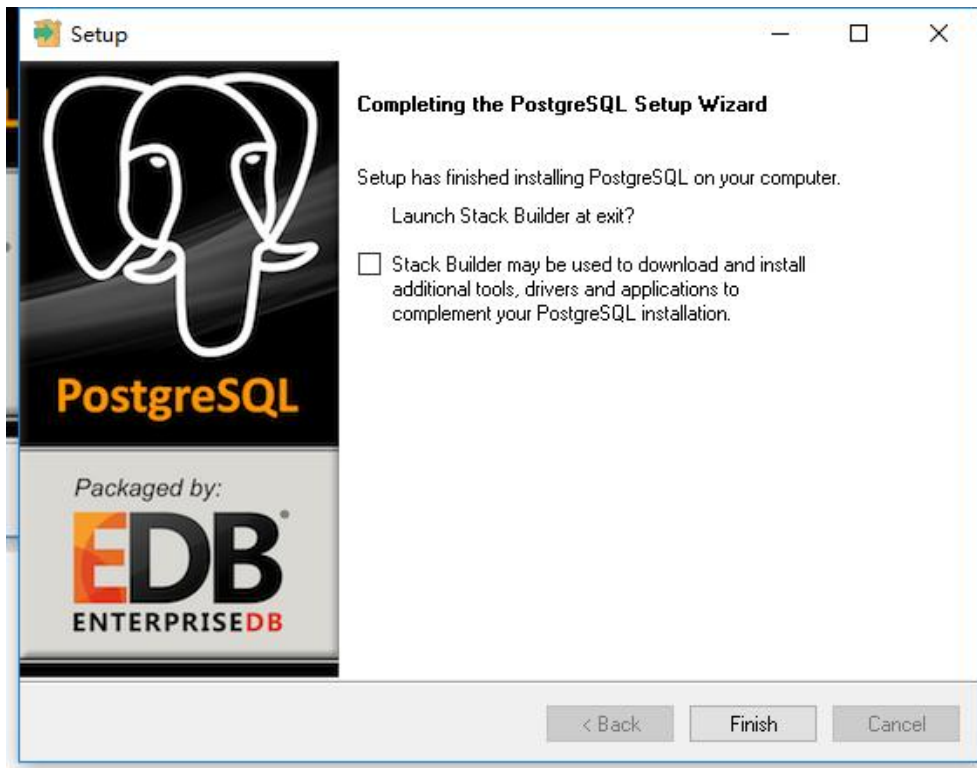


Figure 11

Click "Finish". Complete the installation process of PostgreSQL. After the installation is successful, you can see the PostgreSQL in the Program, The figure is shown in Figure 12.

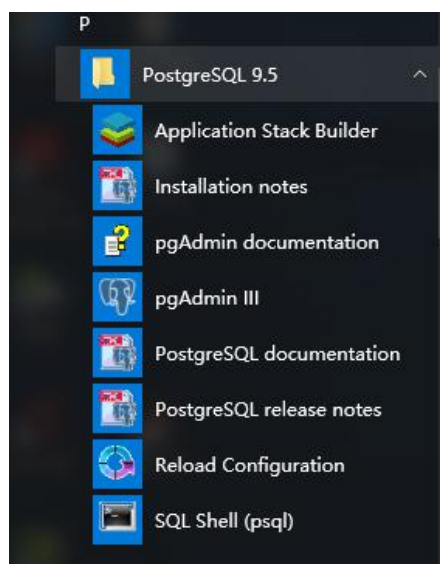


Figure 12

# Software Config Manual

- 1、 open the “pgAdmin III” software. Appear as shown in figure 1:

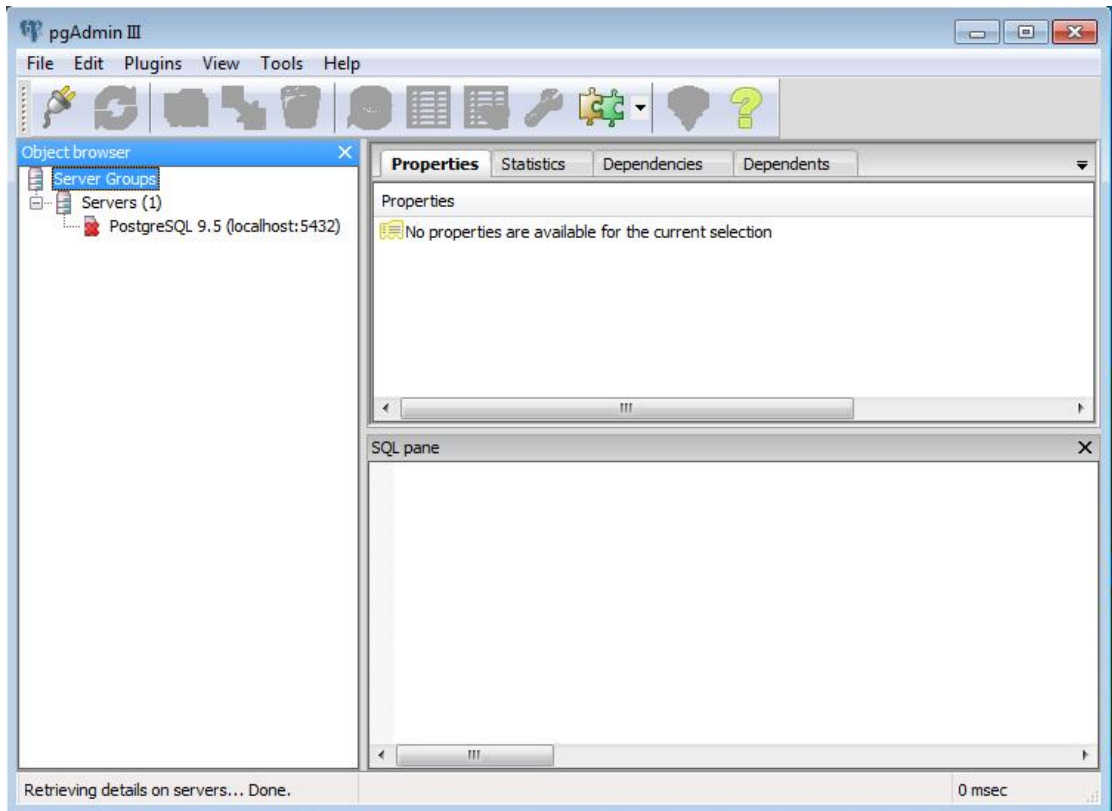


Figure 1

- 2、 Click the "PostgreSQL9.5" on the left list, it will appear as shown in Figure 2, need the user to enter the password , then click ok.

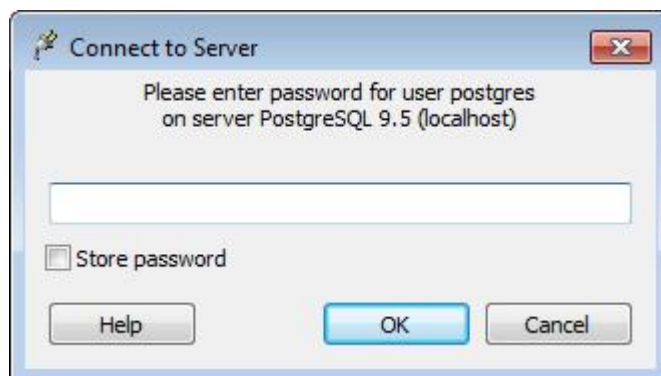


Figure 2

- 3、 Right click on the “Databases”, as shown in Figure 3, click "New Database...", it will appear as shown in Figure 4, enter the corresponding

name "dmmdatase" at the "Name", then click ok.

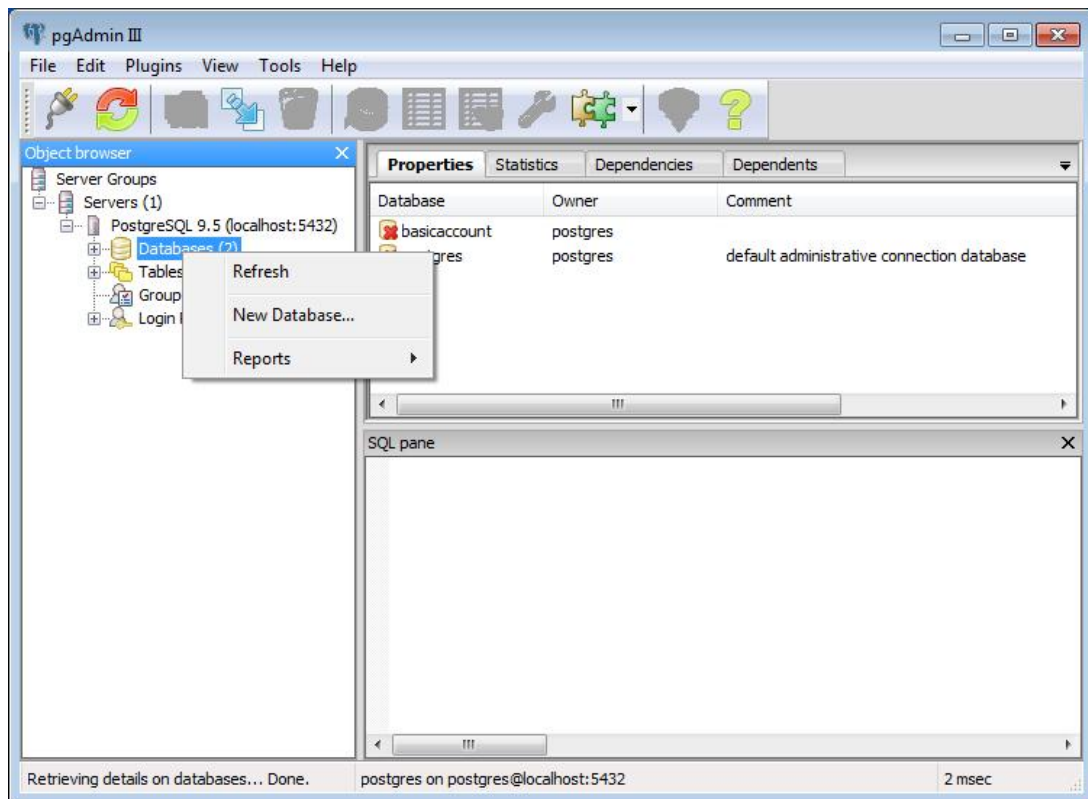


Figure 3

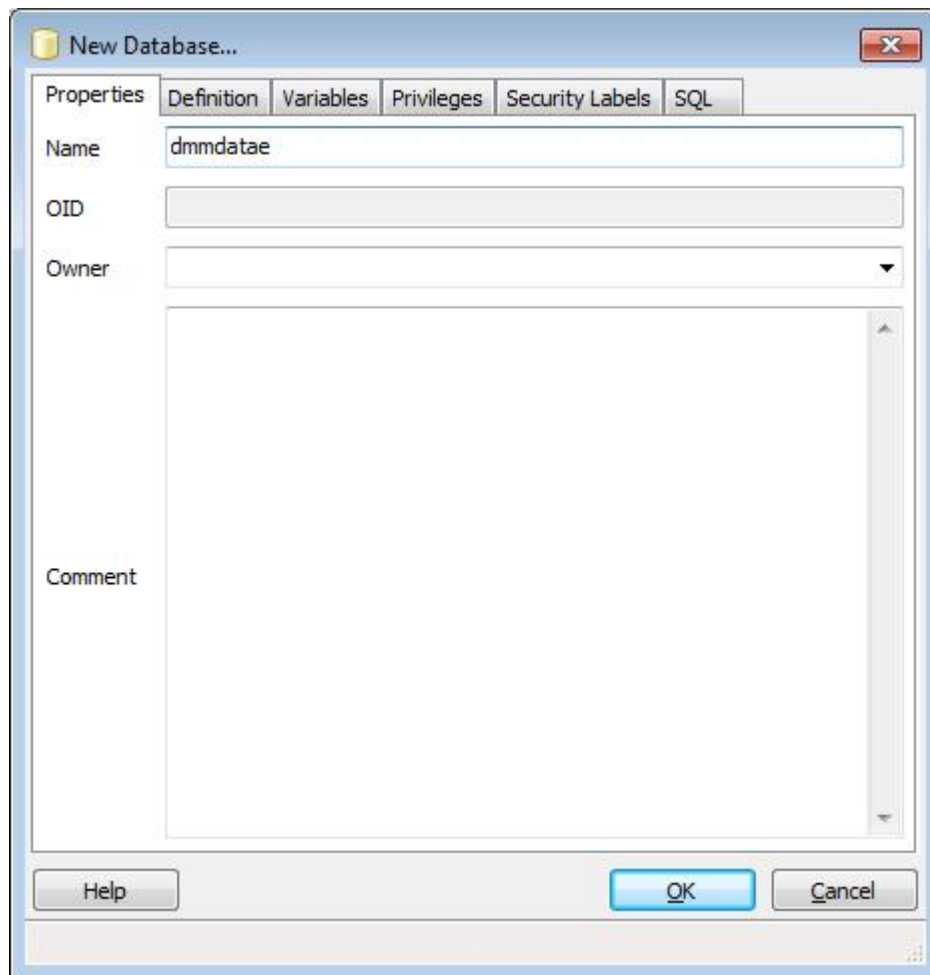


Figure 4

- 4、 When the above step is successful, it will appear as shown in Figure 5 below.

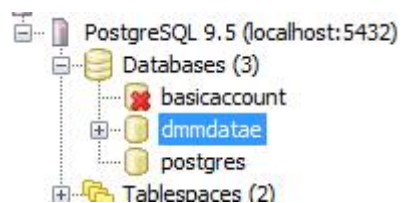


Figure 5

- 5、 Right click on the new "dmmdatæ", as shown in figure 6. Click "Restore" to pop up the dialog box, as shown in figure 7.

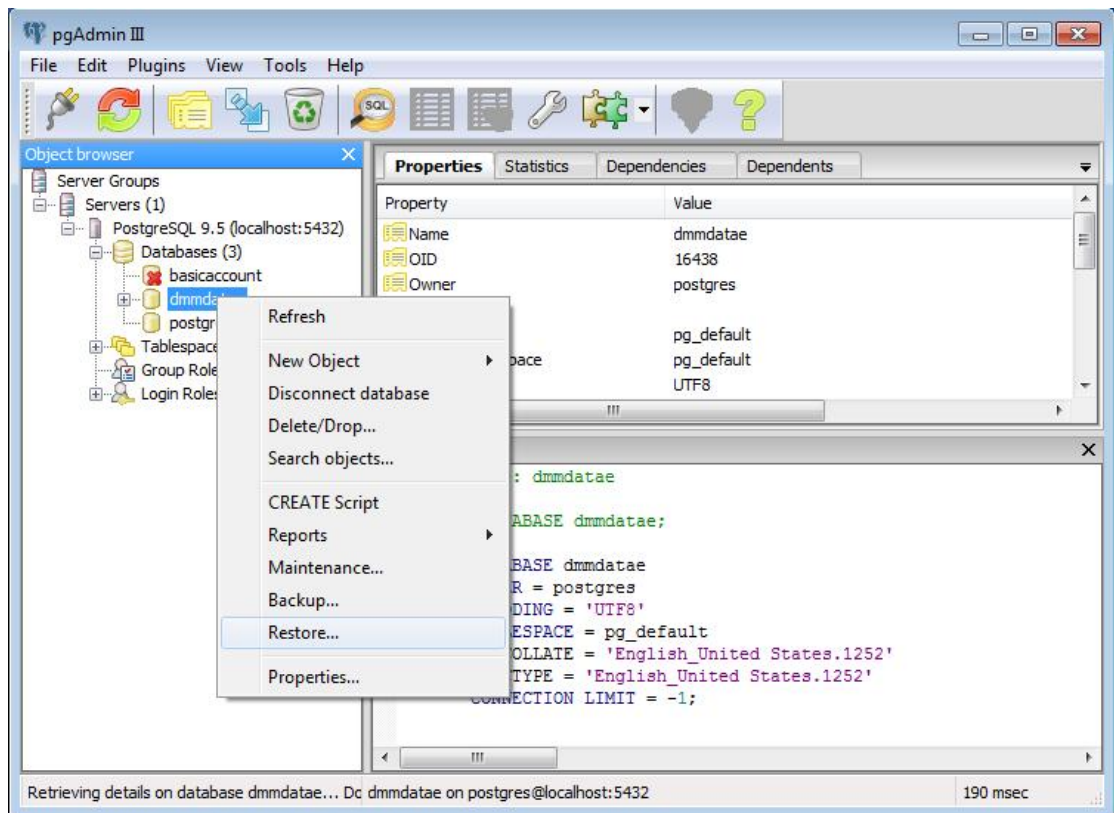


Figure 6

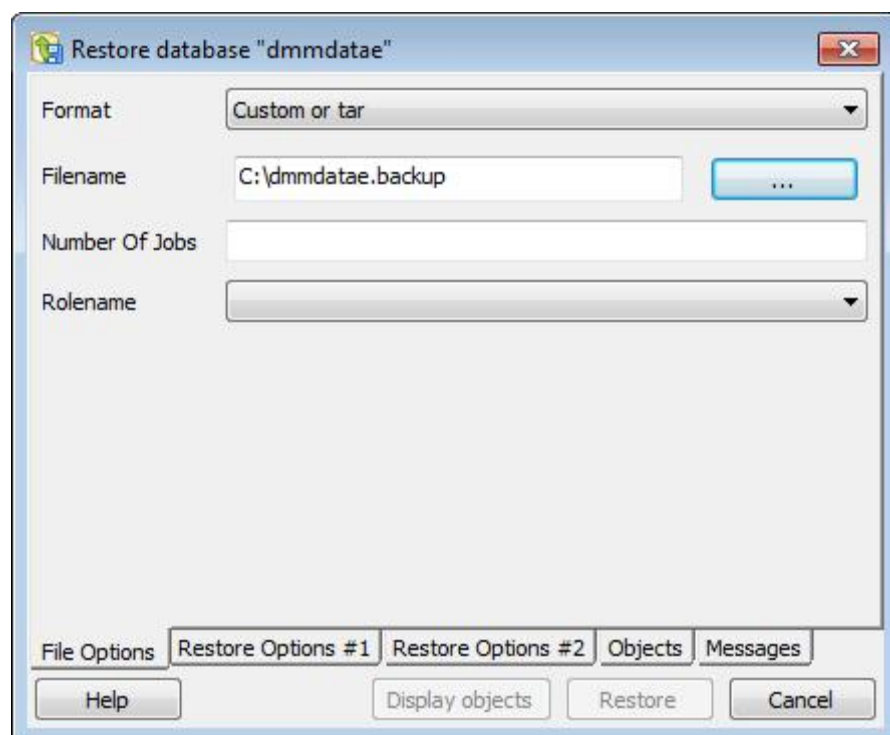


Figure 7



6、 In Figure 7, click the button on the right of the file name, and select the file suffix is “backup” in the folder, and click restore.

7、 Add the installation path of PostgreSQL to the system environment variable.

The setting of environment variables is as follows: (take WIN7 system as an example)

Right click on "my computer" and select "properties" as shown in Figure 8.

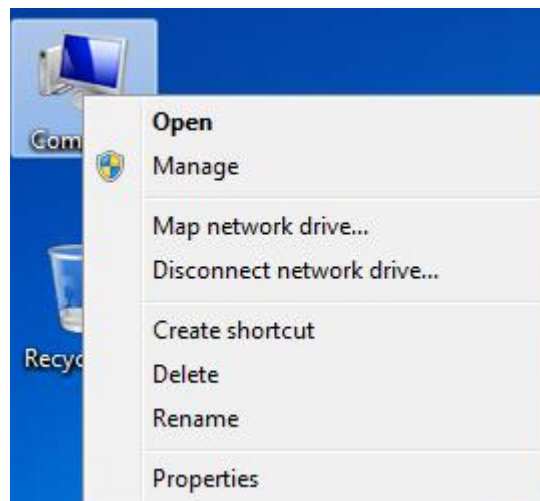


Figure 8

After clicking Properties, open the left side of the dialog box as shown in Figure 9:

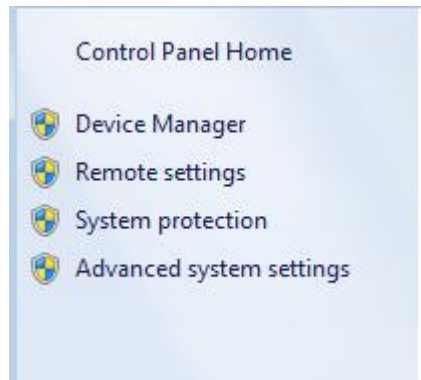


Figure 9

After clicking Advanced system settings, the dialog box opens as shown in Figure 10.

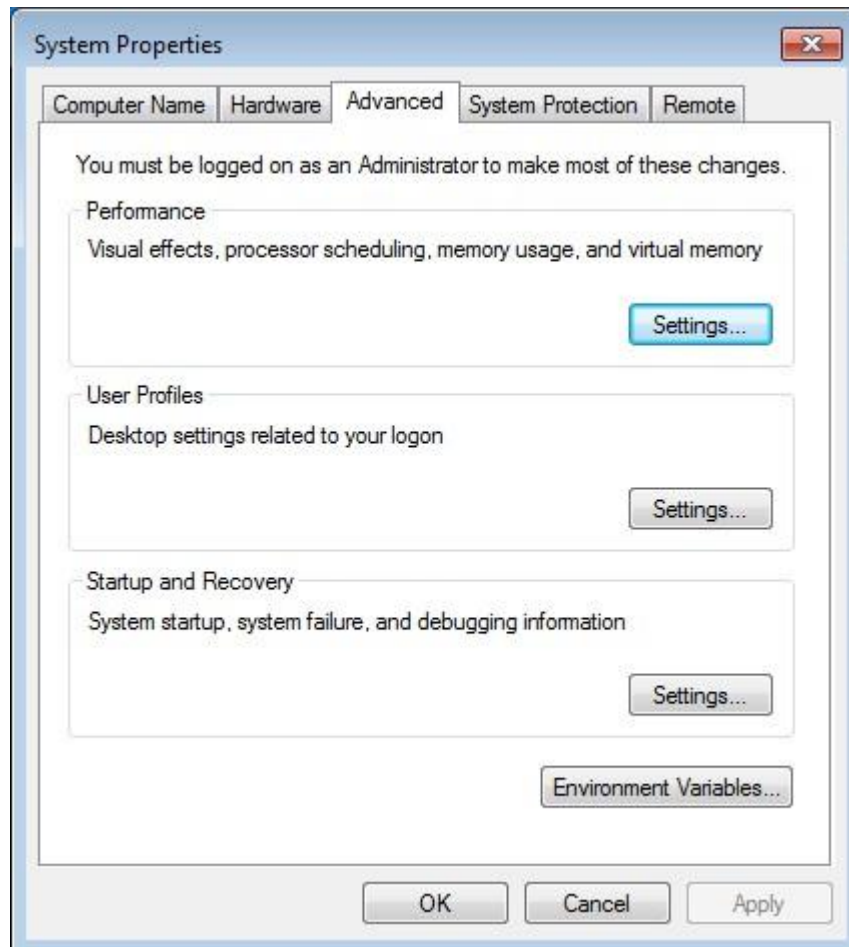


Figure 10

After clicking the Environment Variables, open the dialog box as shown in Figure 11.

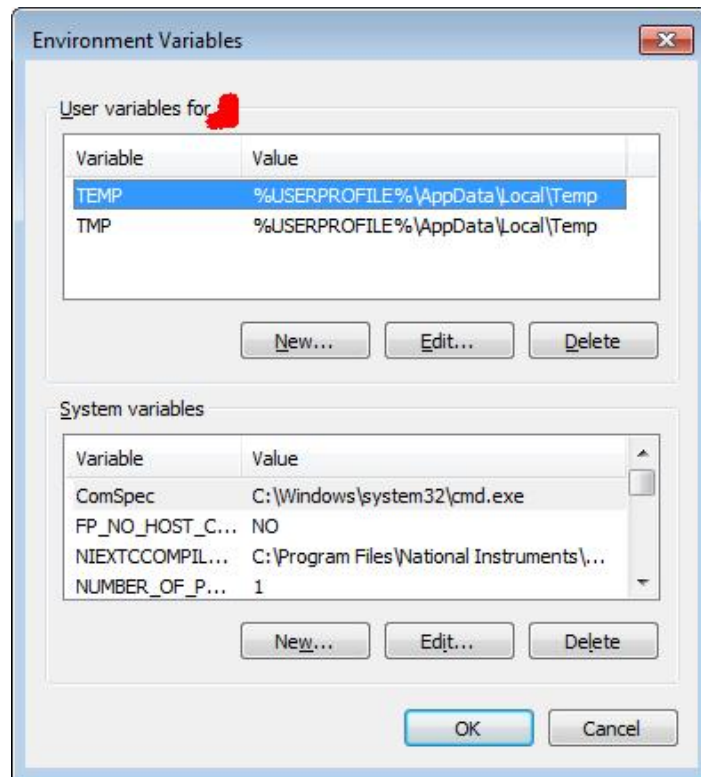


Figure 11

In the System variables of Figure 11, find the row with variable name "Path" and select it as shown in Figure 12.

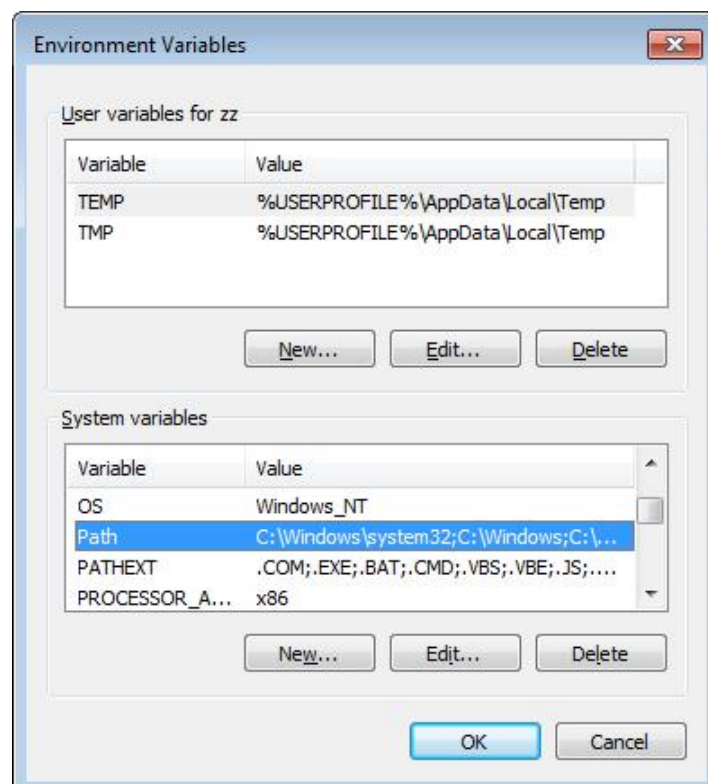


Figure 12

Click the "Edit..." button, as shown in Figure 13.

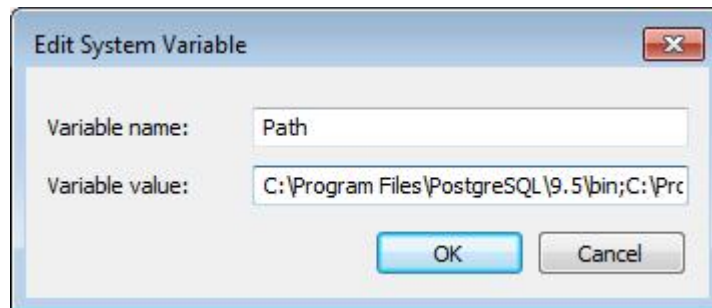


Figure 13

For example : the path is "C:\Program Files\PostgreSQL\9.5\bin", Add "C:\Program Files\PostgreSQL\9.5\bin " in the Variable value and use ";" as a separator. After adding, click OK to complete the setup.

The database software operation is complete.

8、 The application is free of installation and can be run directly.